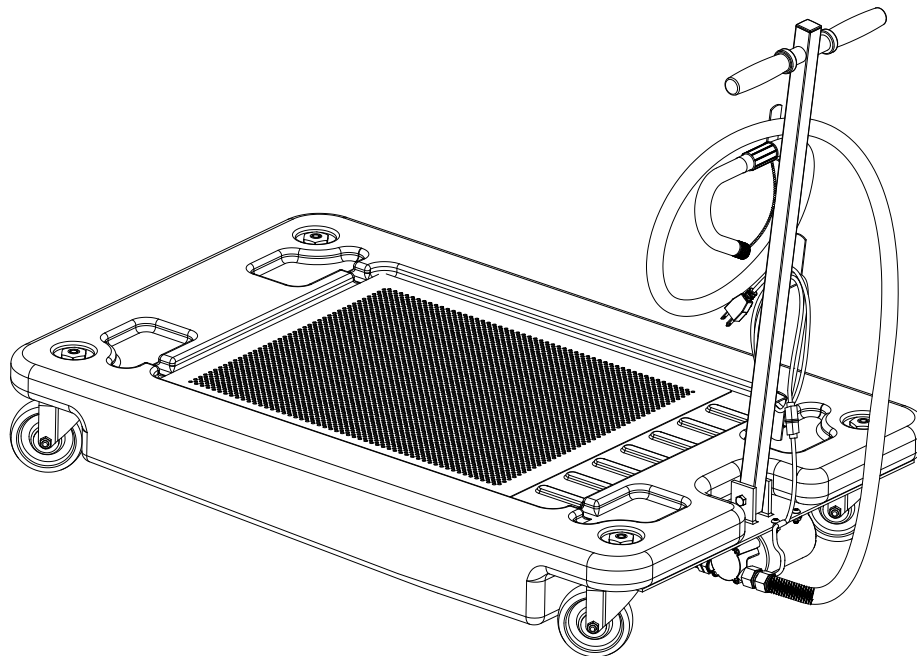


17 U.S. gallon portable low profile drain with electric pump

Model 3669



| | |
|---------------|--------------------|
| Date of issue | August 2018 |
| Form number | 404513 |
| Version | 3 |

Contents

| | |
|---|-----------|
| Safety | 3 |
| Explanation of signal words for safety | 3 |
| Specifications | 3 |
| Assembly* | 4 |
| Usage | 5 |
| Drain operation | 5 |
| Discharge operation | 5 |
| Parts list | 7 |
| Kits list | 7 |
| Troubleshooting | 8 |
| Warranty | 12 |

* Indicates change.

Safety

Explanation of signal words for safety

Read and carefully observe all assembly, operating and troubleshooting instructions before starting these procedures. Truck drain must be assembled, maintained and repaired exclusively by persons familiar with the instructions in this manual.

Assemble and operate truck drain only after safety instructions, warnings and procedures have been read and are completely understood.

Adequate personal protection must be used to prevent splashing of material on the skin or in the eyes.

Always disconnect power source (lock out/tag out) before starting installation of this equipment. Never assemble or disassemble the truck drain while connected to a power source.

Any other use not in accordance with instructions in this manual will result in loss of claim for warranty or liability.

- Do not use the drain on surfaces that are covered with oil or grease.
- Do not use the drain on surfaces that are not flat and level.
- Do not exceed the drain load capacity.
- Do not allow the load to become uneven.
- Do not allow anyone in the vehicle while using the drain.
- Do not drain oil above 160 °F (71 °C) into the drain.
- Do not use the drain near flames or heat sources.
- Do not misuse, over-pressurize, modify parts, or use worn and/or damaged parts.
- Do not use the drain on a vehicle that is running.
- Dispose of used oil properly.
- Failure to comply may result in personal injury and/or damage to equipment.

⚠ WARNING

Read manual prior to installation or use of this product. Keep manual nearby for future reference. Failure to follow instructions and safety precautions may result in death or serious injury.

NOTE

Emphasizes useful hints and recommendations as well as information to prevent property damage and ensure efficient trouble-free operation.

⚠ CAUTION

Indicates a dangerous situation that may lead to light personal injury if precautionary measures are ignored.

⚠ WARNING

Indicates a dangerous situation that may lead to death or serious injury if precautionary measures are ignored.

⚠ DANGER

Indicates a dangerous situation that will lead to death or serious injury if precautionary measures are ignored.

Table 1

Specifications

Reservoir and pump

| | |
|---------------|-------------------------|
| Capacity | 17 U.S. gal (64 liters) |
| Casters | 4 in (101 mm) |
| Electric pump | 115 V AC, 50/60 Hz, 2 A |

| | |
|------------------------------|---------------------|
| Extractor hose length | 6 ft. (1,8 m) |
| Pumping capacity | 350 gph (1 324 lph) |
| Pump maximum oil temperature | 160 °F (71 °C) |
| Pump minimum oil temperature | 40 °F (4,4 °C) |

| | |
|--------------------------|--------------------|
| Pump type | Impeller |
| Duty cycle: intermittent | Maximum 30 minutes |
| Thermal protection | Automatic |

| | |
|------------|--------|
| Motor amps | 1.40 A |
|------------|--------|

Pump material

| | |
|---------------|-----------|
| Body | Bronze SS |
| Motor shaft | 303 SS |
| Retainer ring | BL-22 |

| | |
|-------------|---------|
| Cover | SS |
| Screws | SS |
| Pump gasket | Non ASB |

| | |
|----------|---------|
| Lip seal | Nitrile |
| Impeller | Nitrile |

Assembly*

- 1 Refer to **Fig. 1**. Align hole of mounting bracket (**17**) with hole in clamp (**11**) and hole on electric pump (**7**), making sure all four holes on electric pump (**7**) line up with four holes on mounting bracket (**17**).
- 2 Install bolts (**6**) through top of bracket (**17**) and into pump mounting holes (**7**).
- 3 Install nuts (**8**) on bolts (**6**).
- 4 Using a 5/32 in hex head wrench and 7/16 in wrench, hold nut (**8**) and tighten bolt (**6**).

- 10 Refer to **Fig. 2** and position handle (**13**) in slot of mounting bracket (**17**).
- 11 Install bolts (**15**) into holes of reservoir mounting bracket (**17**) and threaded holes of handle (**13**).
- 12 Install adapter fitting (**4**) and extractor hose (**3**) onto electric pump outlet (**19**) and tighten.
- 13 Place filter screen (**2**) on reservoir (**1**).

NOTE

To prevent cutting or pinching electric cord route cord away from mounting bracket and toward bottom/front of electric motor.

NOTE

Reservoir hose, evacuator hose, hose clamps, hose fittings and handle bolts are shipped inside reservoir (**1**).

- 5 Refer to **Fig. 2** and slide hose clamps (**10**) over both ends of short 8 in (203 mm) reservoir hose (**12**).
- 6 Insert garden hose thread (GHT) to GHT adapter (**9**) into short 8 in (203 mm) reservoir hose (**12**).
- 7 Connect other end of short 8 in (203 mm) reservoir hose (**12**) to barbed fitting assembly (**14**).
- 8 Tighten hose clamps (**10**).
- 9 Install garden hose thread to GHT adapter (**9**) onto electric pump (**7**) fitting.

* Indicates change.

Fig. 1*

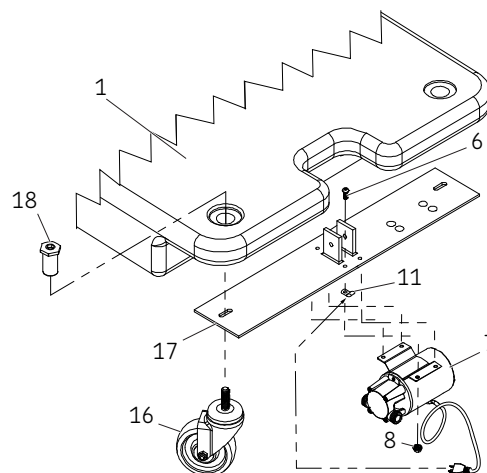
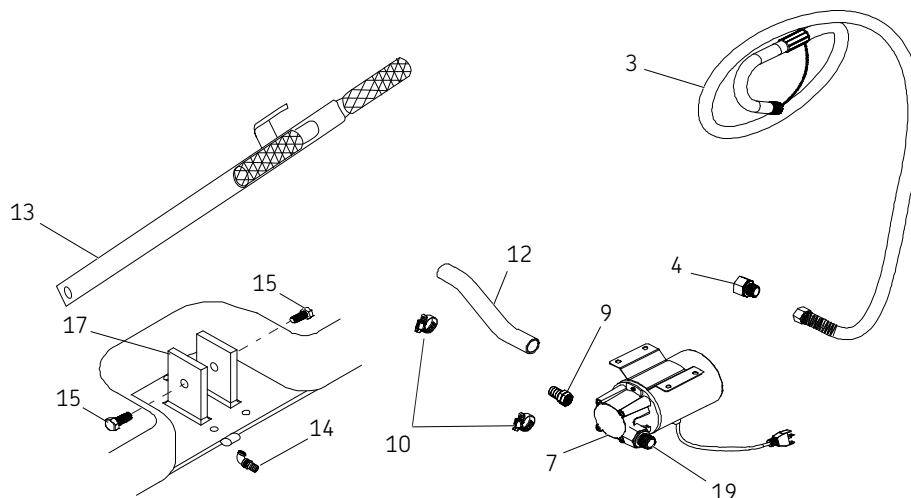


Fig. 2*



Usage

Drain operation

- 1 Place reservoir (1) under vehicle.

⚠ CAUTION

Do not use electrical pump in an area that is wet.

Do not attempt to drain oil from an engine that has not cooled.

Wear proper safety equipment when performing this procedure.

Failure to comply may result in personal injury or damage to equipment.

NOTE

Prior to using drain, inspect for any damage that would prevent proper use.

When placing reservoir under vehicle, make sure opening is directly below oil drain plug of engine.

- 2 Drain engine oil from engine.
- 3 Move reservoir (1) to temporary storage area.

Discharge operation

- 1 Remove nozzle plug from J-hook (3).
- 2 Place J-hook (3) securely into oil storage tank opening of an appropriate bulk fluid storage container.
- 3 Remove filter screen.
- 4 Plug electric cord of pump (7) into electrical source. Observe waste oil level in reservoir (1).

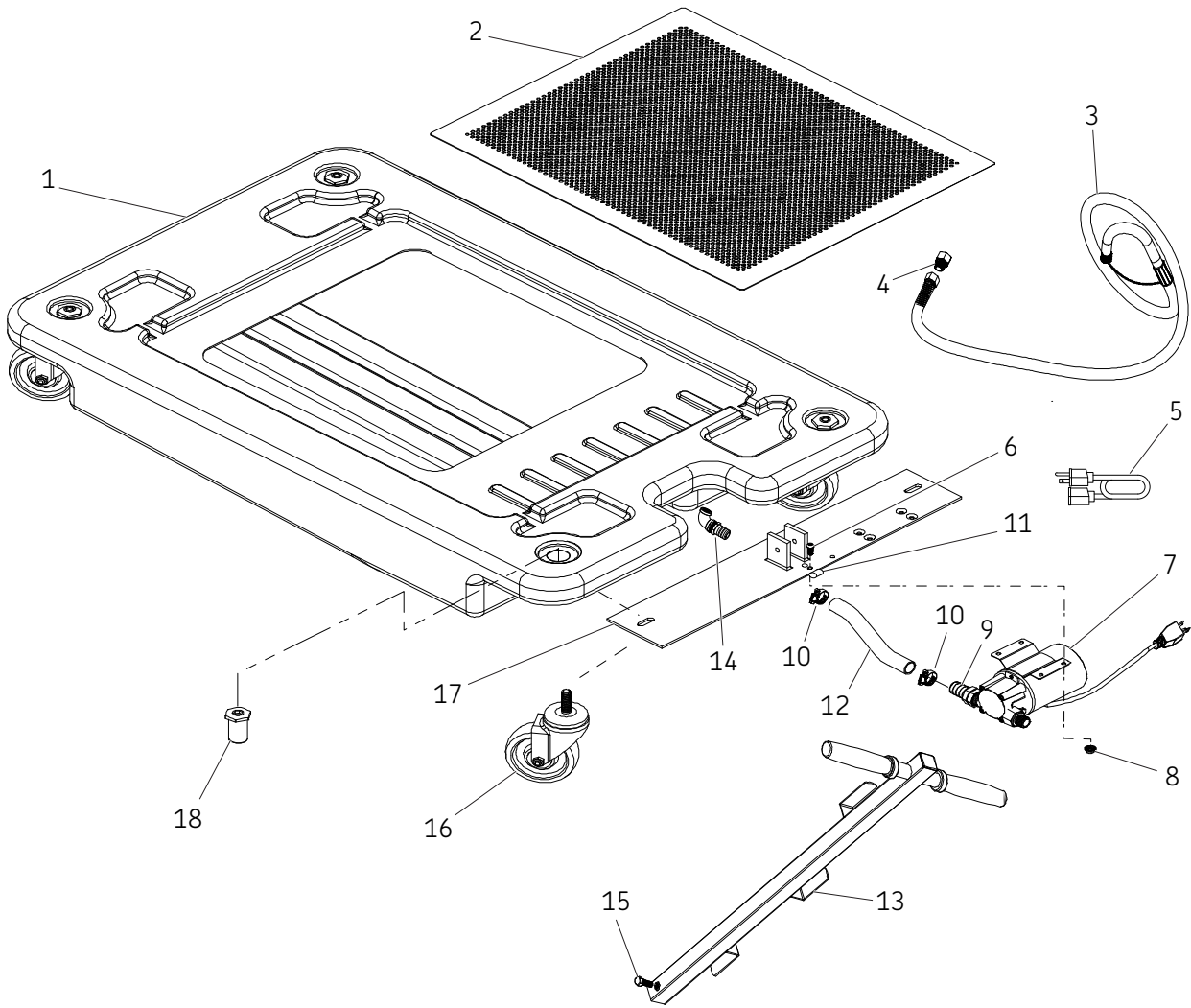
NOTE

Do not leave pump running unattended or allow pump to run after oil has been drained from reservoir.

Failure to comply may result in damage to equipment.

- 5 When reservoir (1) is empty, unplug pump (7) from electrical outlet.
- 6 Reinstall J-hook nozzle plug.
- 7 Install filter screen (2).
- 8 Clean any waste oil from the exterior drain surfaces.
- 9 Dispose of oil in accordance with local guidelines.

Fig. IPB 1



Parts list

| Item | Description | Part number | Quantity |
|------|--|-------------|----------|
| 1 | Reservoir ¹⁾ | | 1 |
| 2 | Filter screen | 278407 | 1 |
| 3 | Evacuator hose with J-hook | 278348 | 1 |
| 4 | Adapter, GHT (Garden hose type) ³ / ₄ in internal to ¹ / ₂ in NPT external | 278411 | 1 |
| 5 | Cord, extension 6 ft | 279693* | 1 |
| 6 | Bolt ¹ / ₄ in x 20 pan head | 278499 | 4 |
| 7 | Electric pump | 278459 | 1 |
| 8 | Nut ¹ / ₄ in serrated | 278500 | 4 |
| 9 | Adapter, GHT ³ / ₄ in | 278456 | 1 |
| 10 | Hose clamp | | 2 |
| 11 | Insulated tube clamp | 244272* | 1 |
| 12 | Reservoir hose 8 in (812 mm) | | 1 |
| 13 | Handle | | 1 |
| 14 | Barbed fitting assembly | 278442 | 1 |
| 15 | Bolt M8 x 20 | | 2 |
| 16 | Caster | | 4 |
| 17 | Mounting bracket ¹⁾ | | 1 |
| 18 | Caster, locknut 1- ¹ / ₄ in | | 4 |

¹⁾ Shown for illustration purposes. Not available for order.
 * Indicates change.

Kits list

| Kit number | Item number | Description | Part number | Quantity |
|------------|-------------|---|-------------|----------|
| 278408 | 16 | Caster | | 4 |
| | 18 | Caster, locknut 1- ¹ / ₄ in | | 4 |
| 278409 | 13 | Handle | | 1 |
| | 15 | Bolt M8 x 20 | | 2 |
| 278455 | 10 | Hose clamp | | 2 |
| | 12 | Reservoir hose 8 in (812 mm) | | 1 |
| 279246 | Not shown | Impeller | | 1 |
| | Not shown | Gasket | | 1 |
| 278457 | 4 | Adapter, GHT ³ / ₄ in internal to ¹ / ₂ in NPT external | 278411 | 1 |
| | 5 | Cord, extension 6 in | 279693* | 1 |
| | 6 | Bolt ¹ / ₄ in x 20 pan head | 278499 | 4 |
| | 7 | Electric pump | 278459 | 1 |
| | 8 | Nut ¹ / ₄ in serrated | 278500 | 4 |
| | 9 | Adapter, GHT ³ / ₄ in | 278456 | 1 |
| | 11 | Insulated tube clamp | 244272* | 1 |

* Indicates change.

Troubleshooting

| Condition | Possible cause | Corrective action |
|--|---|---|
| Pump will not prime or retain prime after operating. | Air leak in suction line. | Repair or replace. |
| | Defective impeller. | Replace. |
| | Seal worn. | Replace. |
| | O-ring leaking. Groove worn in shaft at seal area. Hose kinked. | Replace. Replace motor. Straighten hose. |
| Pump runs but no fluid. | Hose fitting not tight on head. | Tighten hose. |
| | Faulty suction hose. | Repair or replace. |
| | Defective impeller. Clogged inlet. | Replace. Clean or replace. |
| Motor runs too hot. | Voltage incorrect. Excessive discharge back pressure. | Supply to be 115 VAC, 60 Hz. Check pump discharge port and hose, remove any kinks or obstructions. |

This page left intentionally blank.

This page left intentionally blank.

This page left intentionally blank.

Warranty

The instructions do not contain any information on the warranty. This can be found in the General Conditions of Sales, available at: www.lincolnindustrial.com/technicalservice or www.skf.com/lubrication.

skf.com | lincolnindustrial.com

© SKF and Lincoln are registered trademarks of the SKF Group.

© SKF Group 2018
The contents of this publication are the copyright of the publisher and may not be reproduced (even extracts) unless prior written permission is granted. Every care has been taken to ensure the accuracy of the information contained in this publication but no liability can be accepted for any loss or damage whether direct, indirect or consequential arising out of the use of the information contained herein.

August 2018 - Form 404513 Version 3