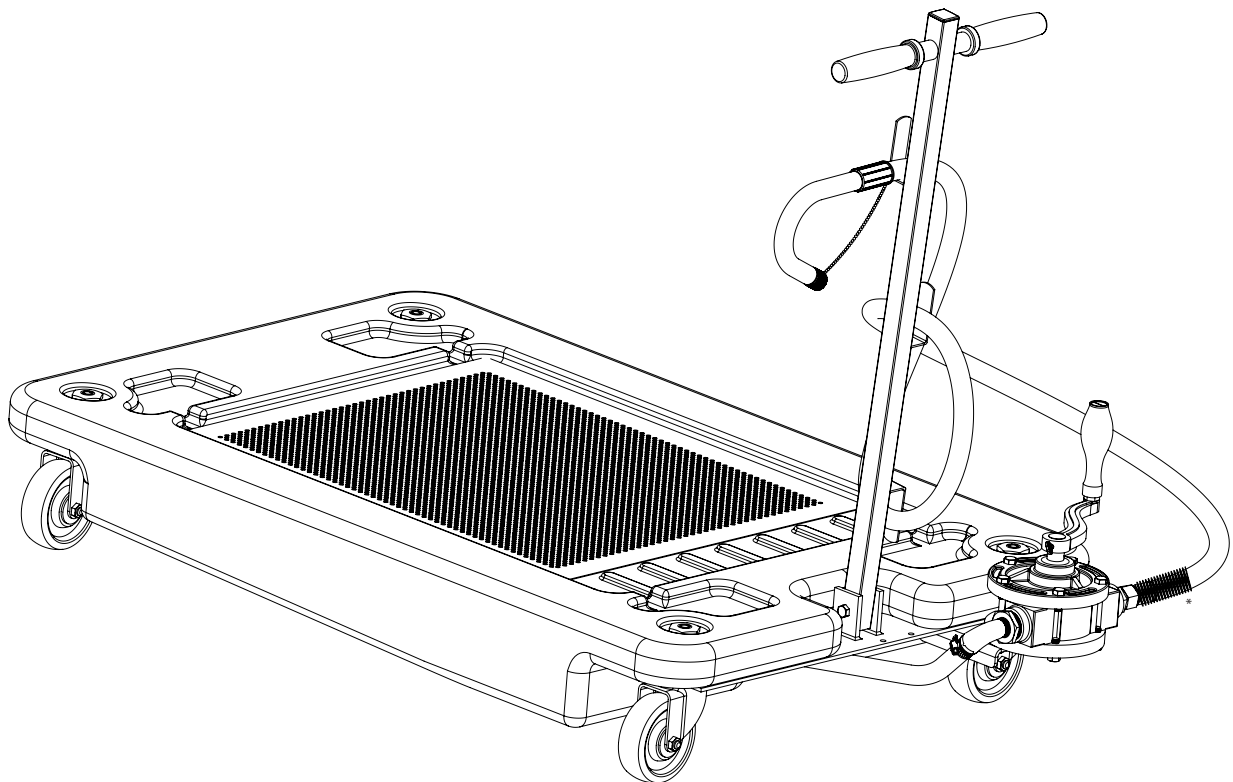


17 U.S. gallon portable low profile drain with hand pump

Model 3667



Date of issue	November 2017
Form number	404512
Version	2

Contents

Safety	2
Explanation of signal words for safety	2
Specifications	2
Assembly	3
Drain operation	4
Discharge operation	4
Illustrated parts breakdown	5
Parts list	5
Troubleshooting	6
Warranty	8

Explanation of signal words for safety

NOTE

Emphasizes useful hints and recommendations as well as information for efficient and trouble-free operation.

CAUTION

Indicates a dangerous situation that can lead to light personal injury or property damage if precautionary measures are ignored.

WARNING

Indicates a dangerous situation that could lead to death or serious injury if precautionary measures are ignored.

DANGER

Indicates a dangerous situation that will lead to death or serious injury if precautionary measures are ignored.

Table 1

Specifications

Capacity	17 U.S. gal (64 liters)
Casters, heavy duty	4 in. (101 mm)
Manual, pump	15 rotations per U.S. gallon (3,7 liter)
Evacuator hose length	6 ft. (1,8 m)

Safety

Read and carefully observe all assembly instructions before assembling, operating or troubleshooting low profile drain. Low profile drain must be assembled, maintained and repaired exclusively by persons familiar with instructions.

Assemble and operate low profile drain only after safety instructions and guide have been read and are completely understood.

Adequate personal protection must be used to prevent splashing of material on skin or in eyes.

Any other use not in accordance with instructions will result in loss of claim for warranty or liability.

- Do not use drain on surfaces covered with oil or grease.
- Do not use drain on surfaces that are not flat and level.
- Do not exceed drain load capacity.
- Do not allow load to become uneven.
- Do not allow anyone in vehicle while using drain.
- Do not drain oil above 160° F (71° C) into the drain.
- Do not use drain near flames or heat sources.
- Do not misuse, over-pressurize, modify parts, or use worn and/or damaged parts.
- Do not use drain on running vehicle.
- Do not use drain for water removal or removal of any fluid that is corrosive.
- Dispose of used oil properly.
- Failure to comply may result in personal injury and/or damage to equipment.

NOTE

Do not use this drain for removal of water, corrosive fluids or alkaline solutions such as trichlene, perchlene or paint thinner. Failure to comply may result in damage to equipment.

Assembly

- 1 Remove contents from inside of reservoir (1).
- 2 Remove hand pump (4) from box.
- 3 Discard 8 in (203 mm) hose.
- 4 Refer to Fig. 1 and remove one of locknuts (14) from caster (13) that holds drain bracket (12).

- 11 Tighten nuts (7) onto bolts (6).
- 12 Position reservoir mounting bracket (12) under reservoir (1) and align slot of reservoir mounting bracket (12) with hole of reservoir (1).
- 13 Insert caster (13) into mounting slot of reservoir (1).
- 14 Install locknut (14) into top of reservoir hole (1) and onto caster (13).

- 16 Refer to Fig. 2 and position handle (10) in slot of mounting bracket (12).
- 17 Insert bolts (11) into holes of reservoir mounting bracket (12) and threaded holes of handle (10).
- 18 Connect end of reservoir hose (9) to fitting (16) on hand pump (4).

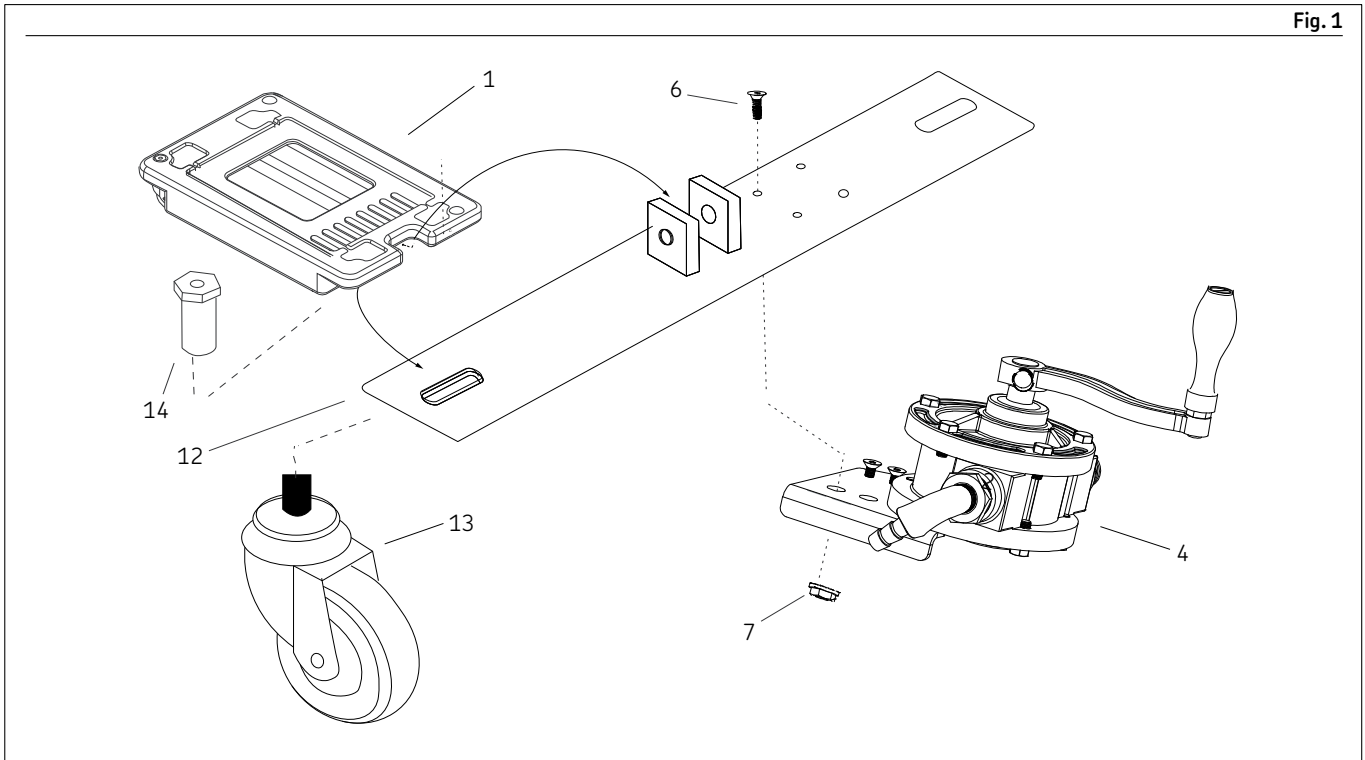


Fig. 1

NOTE

Reservoir hose, evacuator hose, hose clamps, hose fittings and handle bolts are shipped inside the reservoir.

- 15 Tighten both locknuts (14).

- 19 Place hose clamp (8) over reservoir hose (9) and connection (16) on hand pump (4).

- 5 Remove caster (13).
- 6 Loosen other locknut (14) but do not remove locknut (14).
- 7 Pull bracket (12) away from reservoir (1).
- 8 Refer to Fig. 1 and place bracket of hand pump (4) under drain bracket (12).
- 9 Install bolts (6) through drain bracket (12) and into pump bracket (4).
- 10 Install serrated nut (7) on each bolt (6).

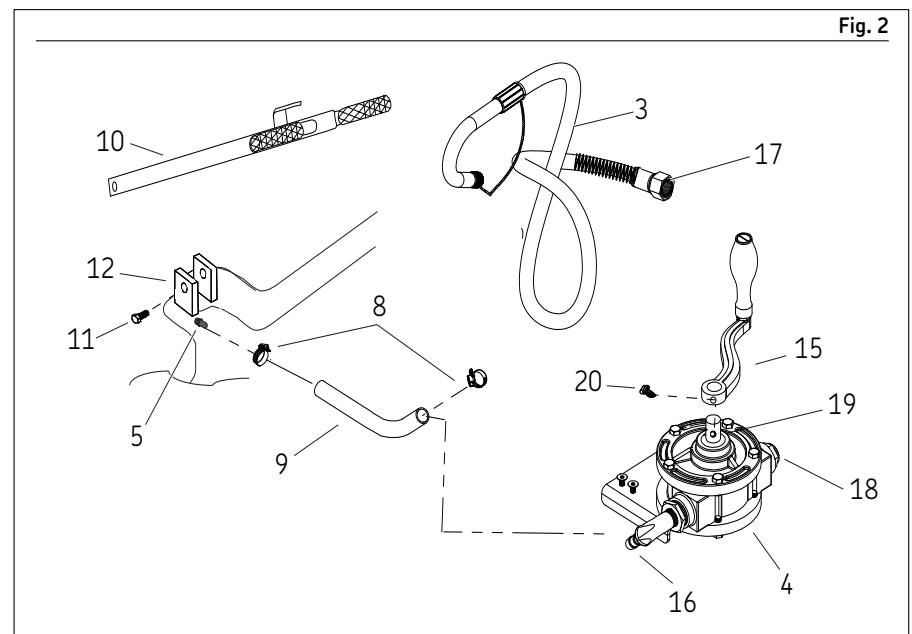


Fig. 2

- 20 Tighten hose clamp (8) securing reservoir hose (9) to connection (16).
- 21 Slide second hose clamp (8) over reservoir hose (9).
- 22 Connect end of reservoir hose (9) to barbed fitting assembly (5) on reservoir (1).
- 23 Position hose clamp (8) over reservoir hose (9) and barbed fitting assembly (5).
- 24 Tighten hose clamp (8).
- 25 Connect extractor hose NPT fitting (17) to connection (18) on hand pump (4).
- 26 Tighten extractor hose NPT fitting (17).
- 27 Place pump handle (15) on shaft (19) of hand pump (4).
- 28 Insert thumb screw (20) into hole of pump handle (15) and tighten.

NOTE

Thumb screw must be tightened securely. Failure to comply may result in damage to equipment.

- 29 Place filter screen (2) on the reservoir (1).

Drain operation

NOTE

Prior to using drain, inspect for any damage that would prevent proper use.
When placing reservoir under vehicle, position opening directly below oil drain plug of engine.

CAUTION

Do not attempt to drain oil from an engine that has not cooled.
Wear proper safety equipment when performing this procedure.
Failure to comply may result in injury to personnel.

NOTE

Pump handle (15) can be removed prior to placing under vehicle, if desired.

- 1 Remove thumb screw (20) and pump handle (15).
- 2 Store on shaft as shown in Fig. 4.
- 3 Place reservoir (1) under vehicle.
- 4 Drain oil into low profile drain.
- 5 Move reservoir (1) to temporary storage area.

Discharge operation

- 1 Remove thumbscrew (20) from handle (15).

NOTE

Stabilize drain while turning hand pump to prevent oil from splashing out of reservoir while operating hand pump.

- 2 Place handle (15) onto shaft (19) as shown in Fig. 3.
- 3 Install and tighten thumbscrew (20) into handle (15).
- 4 Remove nozzle plug from evacuator hose with J-hook (3).
- 5 Place evacuator hose with J-hook (3) into waste oil storage tank.
- 6 Turn hand pump handle (15) in clockwise direction until all oil has been discharged from reservoir (1).
- 7 Remove evacuator hose J-hook (3) from waste oil storage tank.
- 8 Replace nozzle plug on evacuator hose J-hook (3).
- 9 Clean any waste oil from reservoir (1) surfaces.
- 10 Dispose of oil in accordance with local guidelines.

Fig. 3

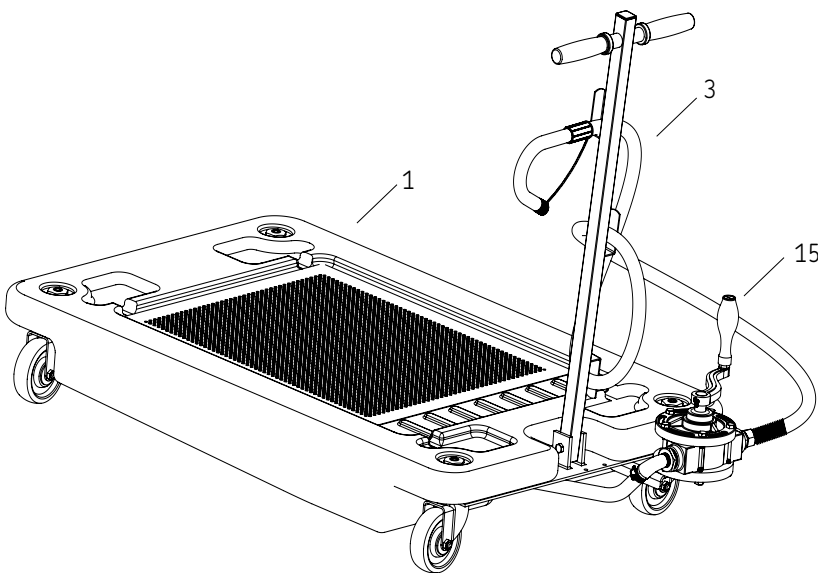
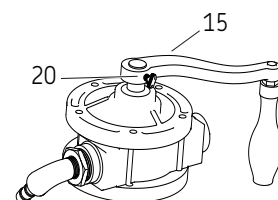
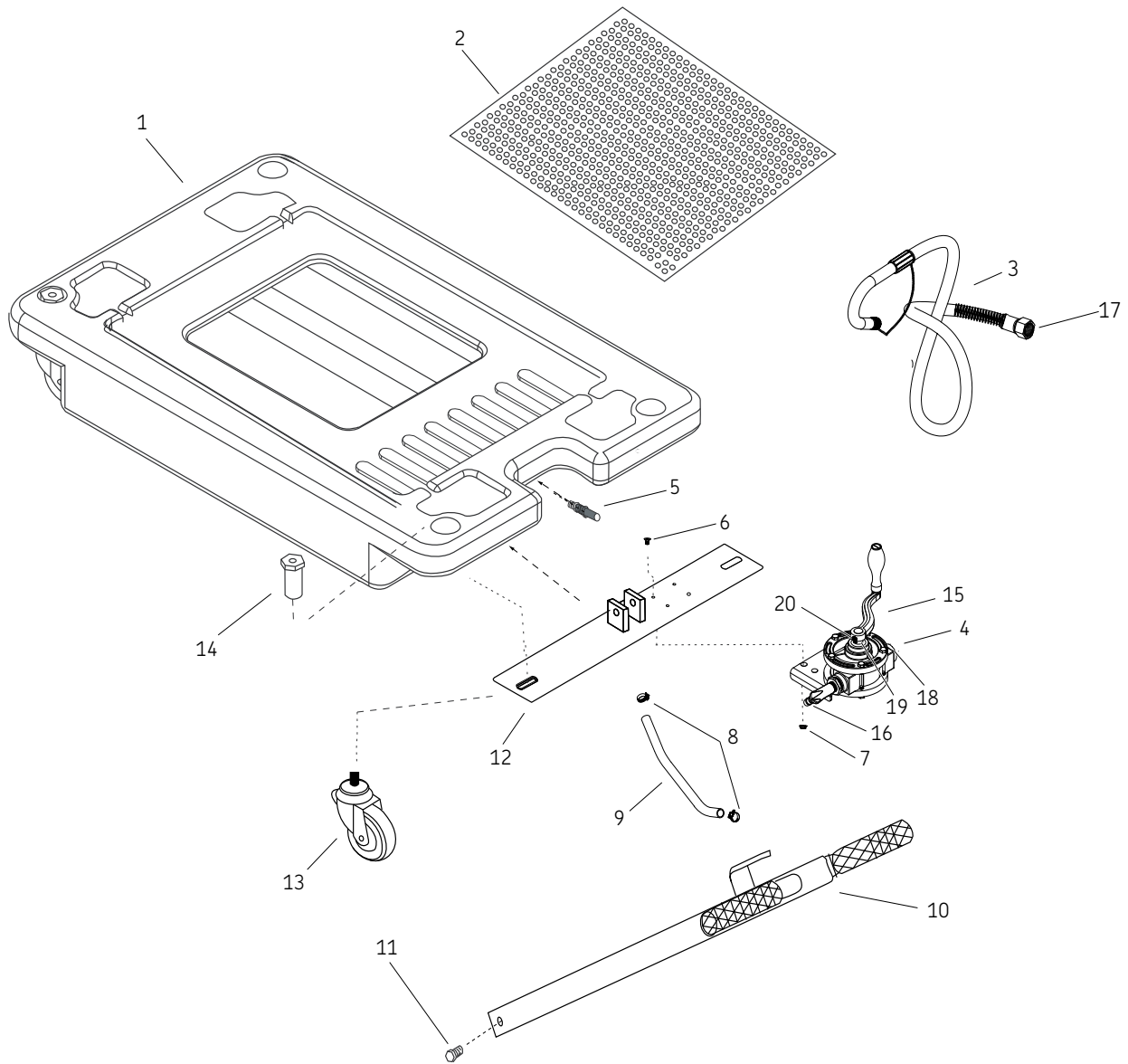


Fig. 4





Parts list

Item	Description	Part no.	Quantity	Item	Description	Part no.	Quantity
1	Reservoir ⁵⁾ *	None	1	11	Bolt M8 x 20 ²⁾	278409	4
2	Filter screen	278407	1	12	Mounting bracket	None	1
3	Evacuator hose with J-hook ³⁾	278348*	1	13	Caster ¹⁾	278408	4
4	Hand pump	278458	1	14	Caster locknut 1 1/4 in (32 mm) ¹⁾	278408	4
5	Barbed fitting assembly	278442	1	15	Pump handle ⁴⁾	None	1
6	Bolt ⁴⁾	278458	4	16	Fitting ⁴⁾	None	1
7	Serrated flange nut 1/4-20 ⁴⁾	278458	4	17	1/2 in NPT internal thread fitting ³⁾	None	1
8	Hose clamp	278455	2	18	1/2 in NPT external thread adapter ⁴⁾	None	1
9	Reservoir hose	278455	1	19	Shaft ⁴⁾	None	1
10	Pull handle ²⁾	278409	1	20	Thumbscrew ⁴⁾	None	1

¹⁾ Included as part of kit 278408.
²⁾ Included as part of kit 278409.
³⁾ Included as part of kit 278348.

⁴⁾ Included as part of kit 278458.
⁵⁾ Shown for illustration purposes not available for order.
⁶⁾ Indicates change.

Troubleshooting

Condition	Possible cause	Corrective action
Pump will not prime or retain prime after operating.	Air leak in suction line.	Repair or replace.
	Hose kinked. Hose fitting not tight on head.	Straighten hose. Tighten fitting.
Pump operates but no fluid moves.	Faulty suction hose.	Repair or replace.
	Clogged inlet/pump vanes	Clean or replace.
Pump seized or handle hard to turn.	Debris in pump.	Remove handle and cover plate, remove any debris.
	Pump rusted or components swelled or damaged from improper fluid use.	Check for housing rust, worn or swollen vanes. Replace as necessary.

This page left intentionally blank.

Warranty

The instructions do not contain any information on the warranty. This can be found in the General Conditions of Sales, available at: www.lincolnindustrial.com/technicalservice or www.skf.com/lubrication.

skf.com | lincolnindustrial.com

® SKF and Lincoln are registered trademarks of the SKF Group.

© SKF Group 2017

The contents of this publication are the copyright of the publisher and may not be reproduced (even extracts) unless prior written permission is granted. Every care has been taken to ensure the accuracy of the information contained in this publication but no liability can be accepted for any loss or damage whether direct, indirect or consequential arising out of the use of the information contained herein.

November 2017 · Form 404512 Version 2