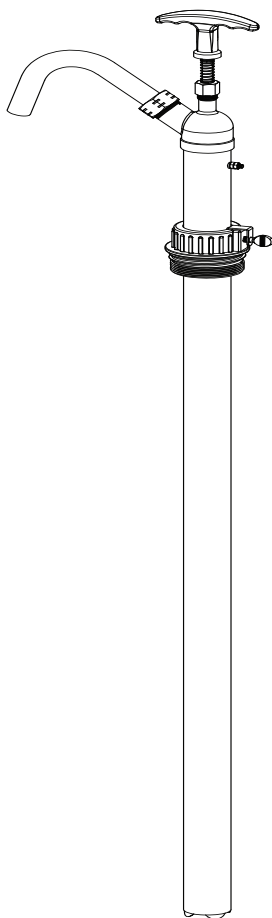


Stainless steel lift action pump

Model 1390



Date of issue	April 2019
Form number	404800
Version	1

Contents

Personal safety	3
Explanation of signal words for safety	3
Maintenance	4
Description	4
Specifications	4
Assembly and operation	5
Priming	5
Replace seal	6
Parts list	8
Troubleshooting	8
Warranty	12

Personal safety

Wear safety glasses at all times when working with pump.

Wear a face shield, proper apparel and suitable respiratory equipment when pumping hazardous chemicals.

Keep work area clean, uncluttered and properly lighted.

Do not operate pump without a ground wire attached to ground wire stud. Failure to comply may result in death or serious injury.

Explanation of signal words for safety

NOTE

Emphasizes useful hints and recommendations as well as information to prevent property damage and ensure efficient trouble-free operation.

⚠ CAUTION

Indicates a dangerous situation that can lead to light personal injury if precautionary measures are ignored.

⚠ WARNING

Indicates a dangerous situation that could lead to death or serious injury if precautionary measures are ignored.

⚠ DANGER

Indicates a dangerous situation that will lead to death or serious injury if precautionary measures are ignored.

⚠ WARNING

Failure to follow all general safety information can result in a fatality, personal injury and/or property damage.

Description

- PTFE piston makes it suitable for use with Diesel Exhaust Fluid (DEF) and many other fluids.
- Pump body made of 316 stainless steel.
- Self priming lift-action pump with exceptional chemical resistance.
- Designed for pumping DEF and other fluids from 15, 30 and 55 gallon (56, 113 and 205 litre) drums.
- Pump includes a 2 in (51 mm) bung adaptor with dual threads for use with metal and plastic drums.
- Threaded stem for attaching ground wire.

Maintenance

NOTE

Pump has been designed and built to require a minimal amount of maintenance.

All maintenance must be performed by qualified personnel.

Specifications

Pump type	Lift action
Maximum viscosity	SAE 40
Adapter type	2 in (51 mm)
Maximum temperature	140 °F (60 °C)
Flow rate	Up to 25 ounces (750 ml)/stroke
Material	Stainless steel
Wetted components	316 stainless steel, PTFE
Recommended use	Diesel Exhaust Fluid (DEF), photographic chemicals/solvents, diesel, kerosene, thinners, acetone, benzene, naptha, urea, light oil (up to SAE 40)
Do not use with	Heavy oils

Assembly and operation

- 1 Remove pump from box.
- 2 Slide bung (16) onto barrel (14).
- 3 Position bung (16) and tighten thumb screw.
- 4 Insert PTFE spout seal (17a) into nut on spout (6).
- 5 Place spout (6) on head (1).
- 6 Thread nut of spout (6) onto head (1).
- 7 Tighten hand tight.

NOTE

Pump flow control tubes (17c) included in kit (17) may be used to control flow of fluid.

Remove T-handle (3) (→ **Replace seal, page 6**) and install flow control tubes (17c) between nut (2) and spring (4) as needed.

⚠ DANGER

Do not use with gasoline.

Failure to comply will lead to death or serious injury.

- 8 Place pump in drum and tighten bung (16) into threads of drum.

- 9 Adjust height of barrel (14) and tighten thumbscrew on bung (16).
- 10 Thread hex nut (15) onto threaded stud (18).
- 11 Attach ground wire to threaded wire stud (18).
- 12 Install hex nut (15) over ground wire and on stud (18) tighten hex nut (15).
- 13 Operate pump by moving T-handle (3) up down.

⚠ CAUTION

Do not pump too fast. Fluid may splash onto skin.

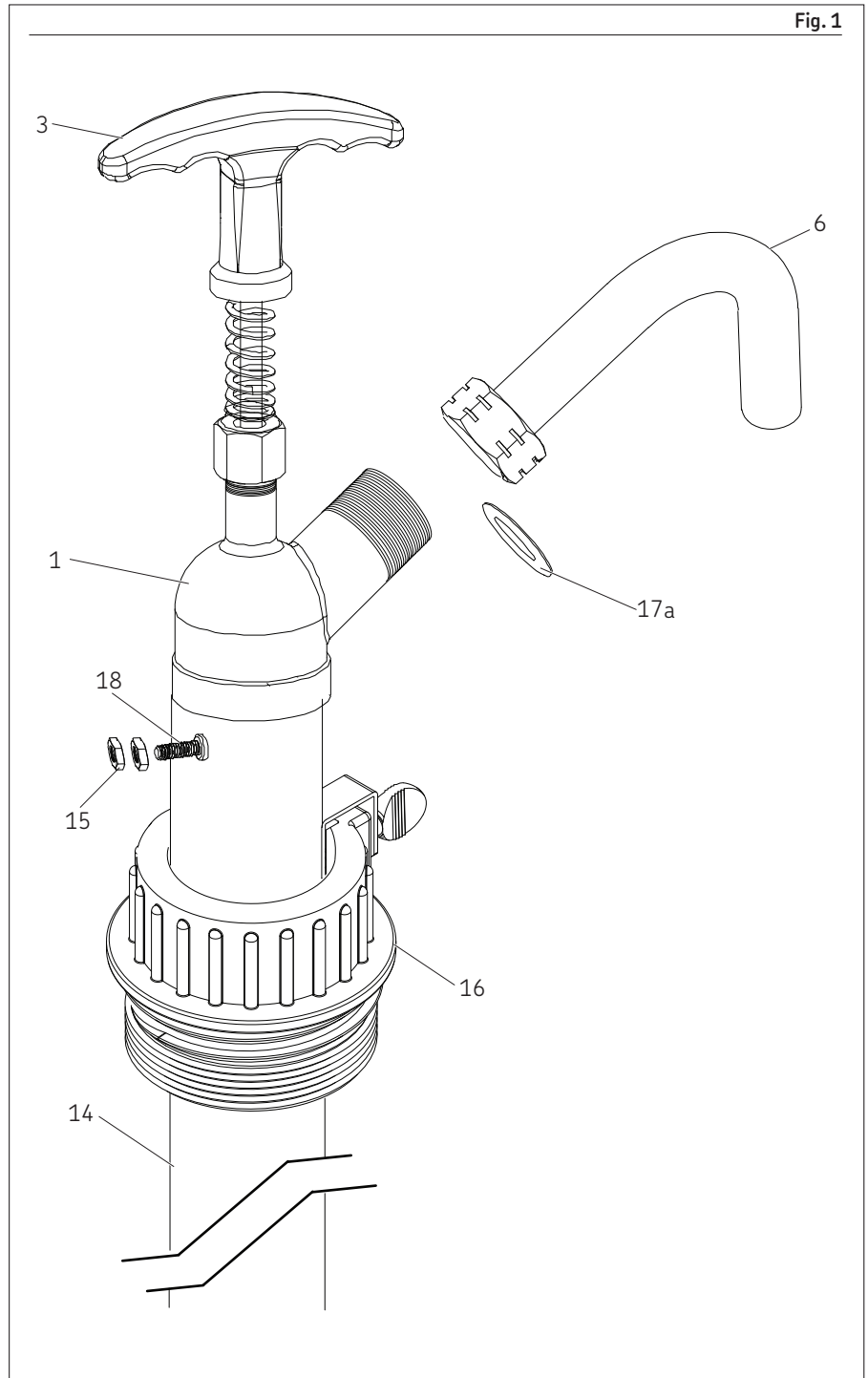
Failure to comply may result in injury to personnel.

NOTE

When using pump for first time or if using after a long period of storage, pump may need priming.

Priming is done by stroking handle 4-5 times.

Fig. 1



Priming

Replace seal

NOTE

Protect rod (13) with cloth or other material when placing in vice during T-handle (3) removal (→ Fig. 2).

Failure to comply may result in damage to rod (13).

- 1 Place rod (13) in vice (→ Fig. 2) and tighten vice.
- 2 Rotate T-handle (3) counter-clockwise and remove from rod (13).
- 3 Remove from vice.
- 4 Remove spring (4) from rod (13). (→ Fig. 2).
- 5 Unscrew nut (2) from head (1).
- 6 Remove nut (2) from rod (13).

NOTE

Do not over tighten nut (2) when attaching to head (1). Failure to comply may result in damage to seal (4) and result in difficulty operating pump. Refer to Fig. 2.

NOTE

Do not over tighten nut (2) when attaching to head (1). (→ Fig. 2).

Failure to comply may result in damage to seal (5).

- 7 Replace damaged seal (5) under nut (2).
- 8 Reinstall nut (2) and hand tighten.
- 9 Slide spring (4) onto rod (13).

- 10 Thread T-handle (3) onto rod (13) and tighten hand tight.

- 11 Operate T-handle (3) for smooth pumping, adjust nut (2) as needed.

Fig. 2

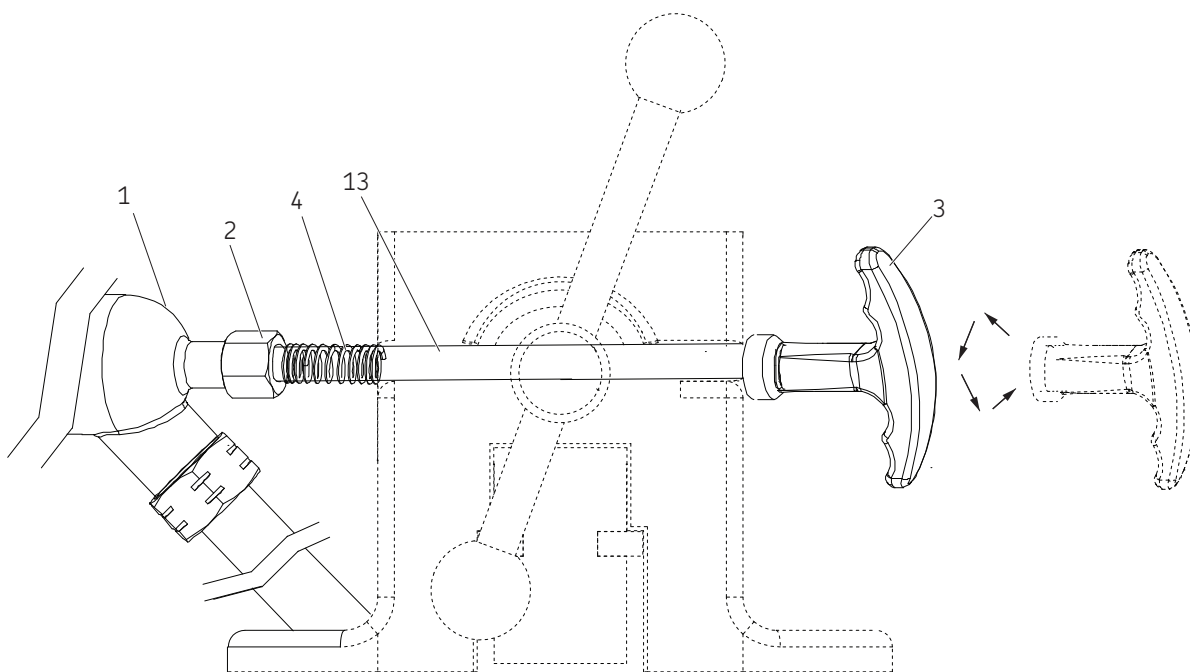
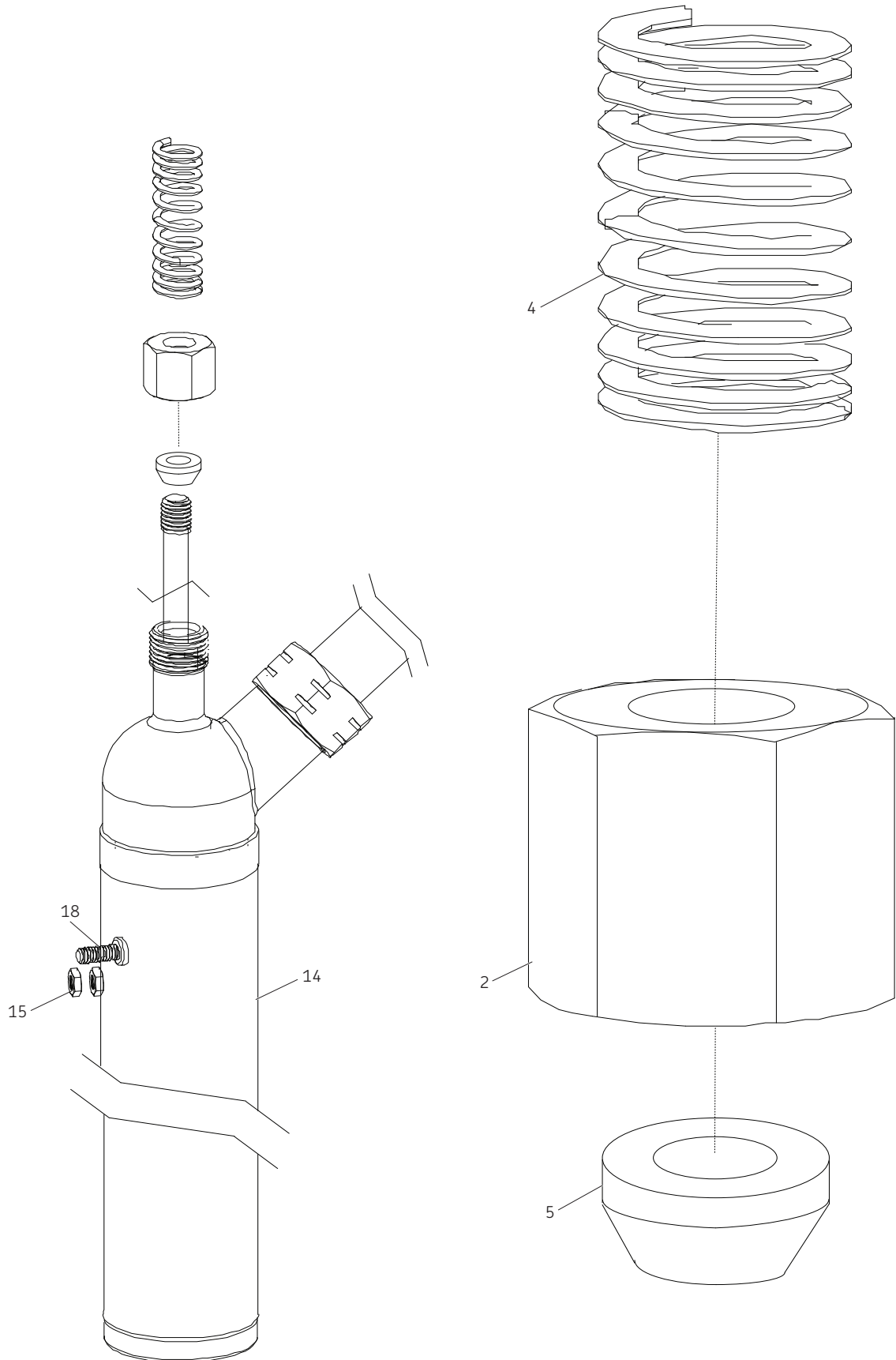
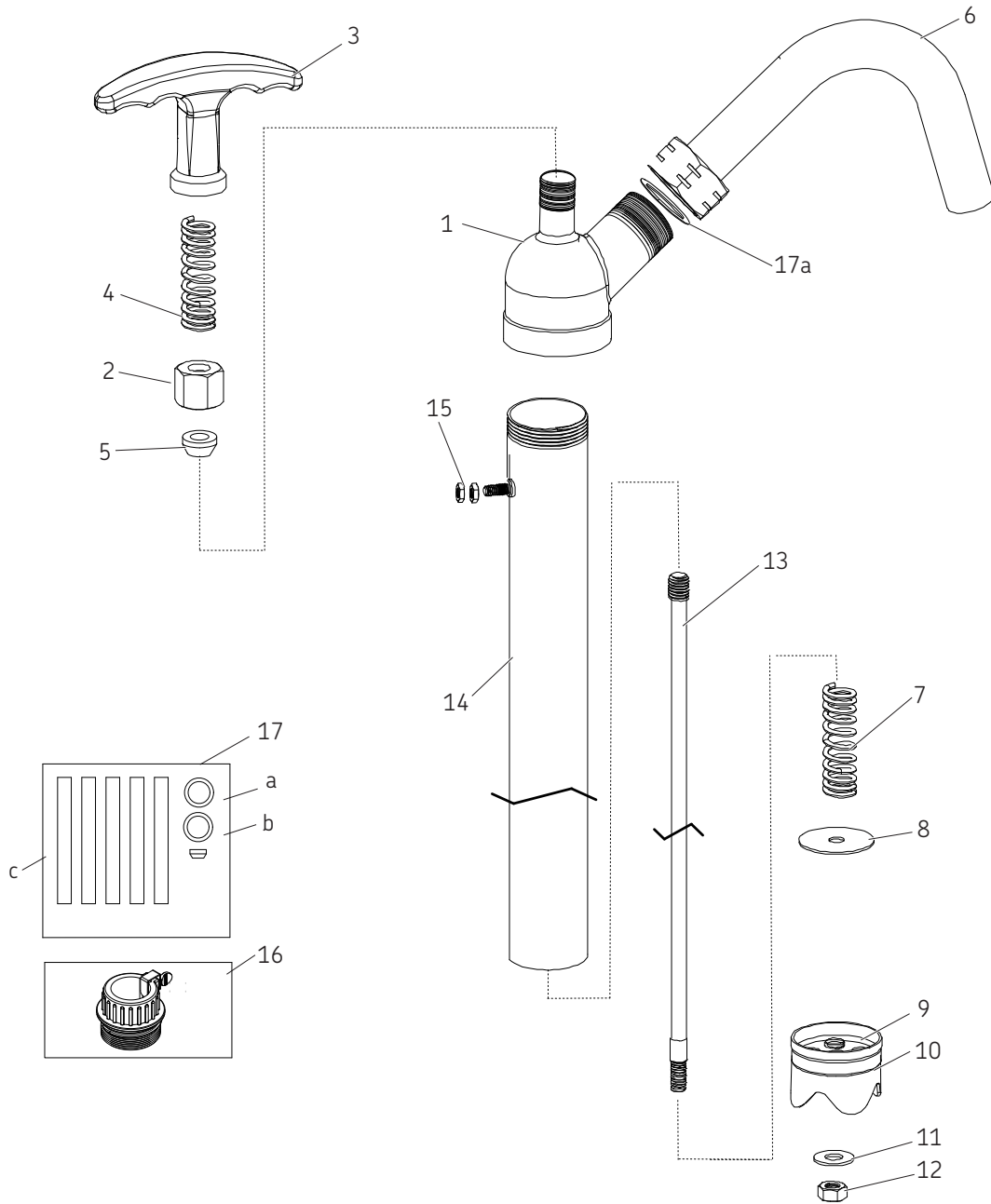


Fig. 3





Parts list

Item	Description	Part number	Quantity	Item	Description	Part number	Quantity
1	Head	Not available	1	10	Follower sub-assembly cap	Not available	1
2	Nut	Not available	1	11	Washer	Not available	1
3	T-handle	270078	1	12	Lock nut	Not available	1
4	Spring	Not available	1	13	Rod	Not available	1
5	Seal	Not available	1	14	Barrel	Not available	1
6	Spout	270081	1	15	Hex nut M4 x .7	Not available	2
7	Spring	Not available	1	16	Bung	270080	1
8	Steel washer	Not available	1	17	Kit	270079	1
9	Plunger	Not available	1	17a	Spout seal	Not available	2
				17b	Seal (5) replacement	Not available	1
				17c	Flow restriction tube	Not available	4

Troubleshooting

Problem	Cause	Solution
Pump will not dispense fluid or prime.	Pump is drawing air, not fluid.	Ensure pump tube is submerged in fluid. Check seals for leaks. If needed replace seals and tighten fasteners.
	Suction barrell inlet is clogged.	Clean suction tube inlet.
T-handle difficult or impossible to move.	Extended storage time.	Clean and inspect for deposits on components. Replace parts if damaged.
		Flush pump with fluid being used after extended storage time.
		Damaged seal (5) or nut (2) from being over tightened.

This page left intentionally blank.

This page left intentionally blank.

Warranty

The instructions do not contain any information on the warranty. This can be found in the General Conditions of Sales, available at: www.lincolnindustrial.com/technicalservice or www.skf.com/lubrication.

skf.com | lincolnindustrial.com

® SKF and Lincoln are registered trademarks of the SKF Group.

© SKF Group 2019
The contents of this publication are the copyright of the publisher and may not be reproduced (even extracts) unless prior written permission is granted. Every care has been taken to ensure the accuracy of the information contained in this publication but no liability can be accepted for any loss or damage whether direct, indirect or consequential arising out of the use of the information contained herein.

April 2019 · Form 404800 Version 1