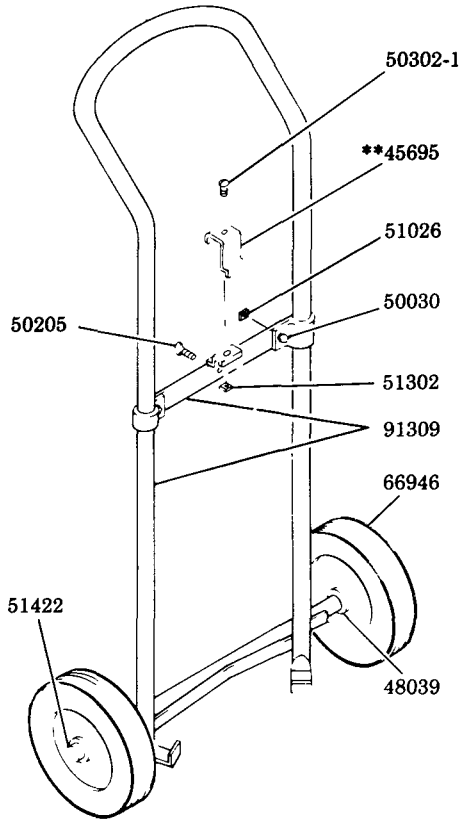


120 LB. DRUM SIZE 50:1 RATIO

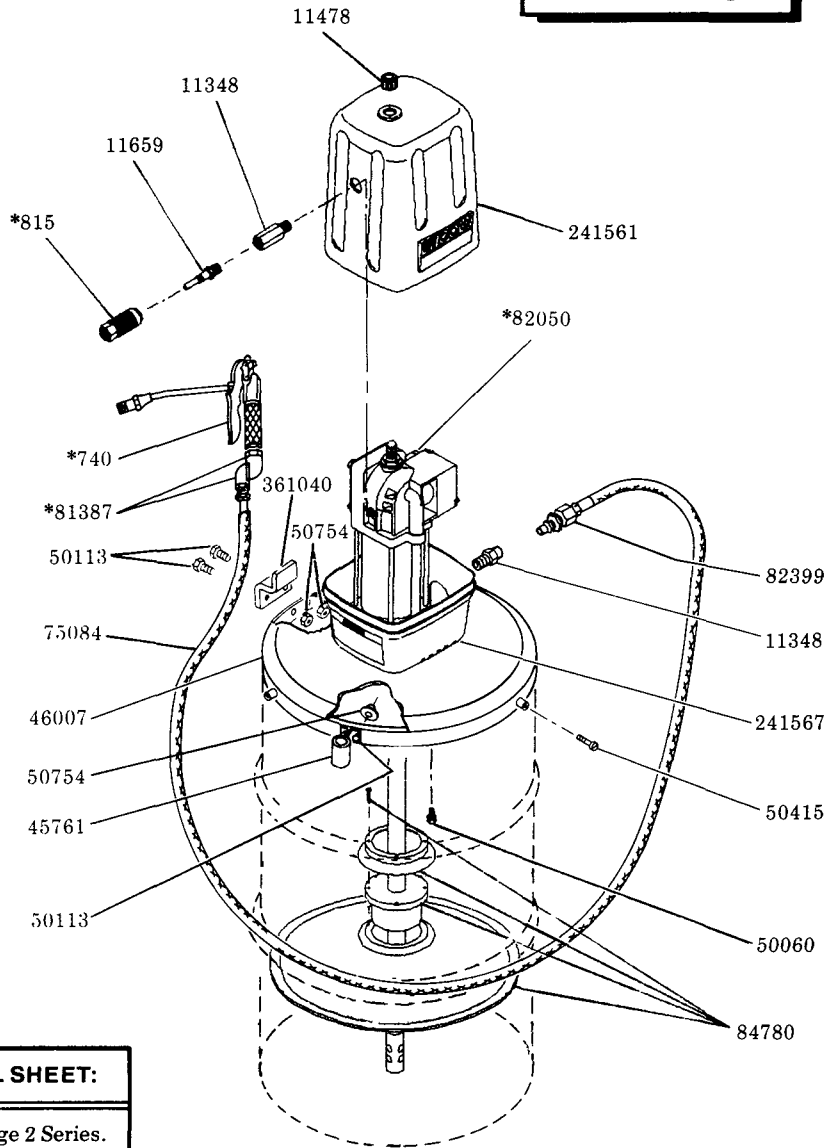
**\*\*NOTE**

45695 Bracket used only  
with 987 type containers.

**WARNING**  
Do not operate this unit  
with combustible gas



**674 DOLLY TRUCK**



*REFER TO SEPARATE SERVICE MANUAL SHEET:		
740 Control valve	—	Section F3, Page 2 Series.
815 Air coupler	—	Section G9, Page 2 Series.
81387 Swivel	—	Section F1, Page 2 Series.
82050 Basic pump	—	Section A5, Page 7 Series.

**NOTE:**

Follower must be rubbed into the lubricant to insure a seal on the bottom surface of the follower.

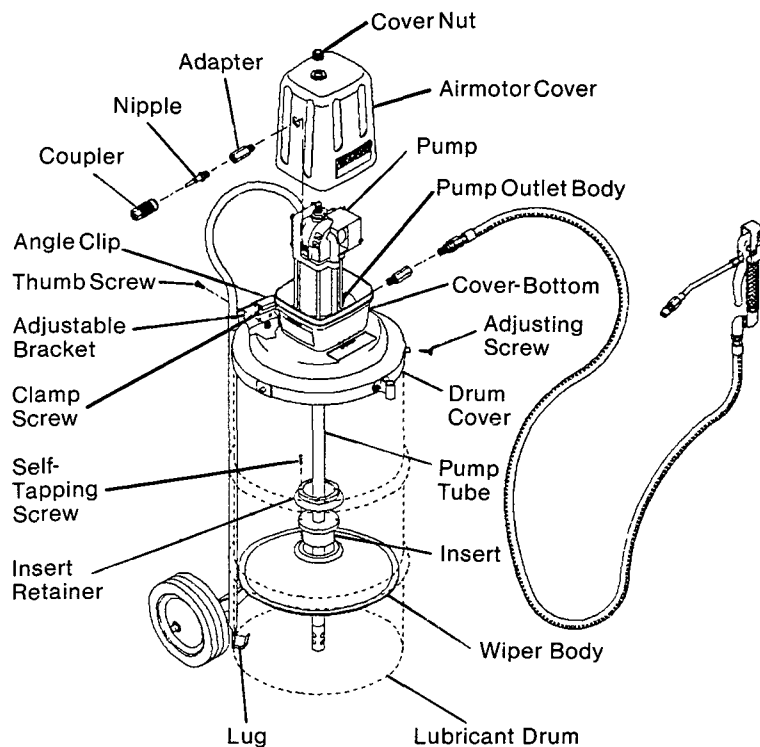
## INSTRUCTIONS FOR ASSEMBLING LUBRIGUN:

- 1) Assemble drum cover to pump
  - a) Remove cover nut from top of pump. Lift airmotor cover from pump.
  - b) Remove the four screws holding the cover-bottom to the pump outlet body.
  - c) Hold pump with pump outlet body resting securely on the inner surface of the cover-bottom. Insert end of pump tube through hole in drum cover. Line up holes in drum cover, cover-bottom and pump outlet body. Replace the four screws and tighten securely.
- 2) Remove drum top.
- 3) Push insert through wiper body with small cone of wiper body facing up. Place insert retainer over insert and align the holes on the insert and insert retainer. Secure assembly with four self-tapping screws.
- 4) Follower is to be inserted into drum (with insert side up) against the surface of the lubricant.
 

**NOTE:** Be sure to remove follower when drum is empty.
- 5) Insert pump into lubricant drum.
  - a) Guide end of pump tube into the follower insert.
  - b) Lower pump tube into lubricant drum until drum cover rests on top bead of drum. Insert the three adjusting screws into the drum cover and tighten securely to hold the pump to the drum.
- 6) Clamp lubrigun to dolly truck
  - a) Set drum over lugs
  - b) Loosen clamp screws.
  - c) Adjust bracket to clamp drum.
  - d) Clamp adjustable bracket to angle clip on drum cover. Tighten clamp screws and thumb screw to hold drum.
- 7) Assemble the lubricant delivery hose to the pump outlet body. Connections must be leakproof.
- 8) Replace airmotor cover.
  - a) Place cover over airmotor and position over cover-bottom.
  - b) Replace cover nut on pump stud to hold airmotor cover securely in place.
  - c) Assemble air coupler nipple and adapter through hole in side of airmotor cover and into airmotor. Connection must be leak-proof.
- 9) Attach air coupler to an air hose of sufficient length so that lubrigun can be moved about, with air hose attached, to cover the entire lubrication area. When air coupler is connected to air coupler nipple, lubrigun is ready for operation.

## SERVICE PARTS

Part	Qty.	Description
740	1	Control valve
815	1	Air coupler
11348	2	Adapter
11478	1	Cover nut
11659	1	Air coupler nipple
45695	1	Accessory clamp
45761	1	Control valve hanger
46007	1	Drum cover
48039	2	Washer
50030	2	Screw
50060	4	Screw
50113	4	Screw
50205	1	Thumb screw
50302-1	1	Bolt
50415	3	Screw
50754	4	Nut
51026	2	Nut
51302	1	Nut
51422	2	Pushnut
66946	2	Dolly wheel
75084	1	High pressure hose
81387	1	Universal swivel
82050	1	Bare pump assembly
82399	1	Straight swivel
84780	1	Follower
91309	1	Dolly truck frame
241561	1	Airmotor cover
241567	1	Cover-bottom
361040	1	Bracket



### RETAIN THIS INFORMATION FOR FUTURE REFERENCE

When ordering replacement parts, list: Part Number, Description, Model Number, and Series Letter.

LINCOLN provides a Distributor Network that stocks equipment and replacement parts.