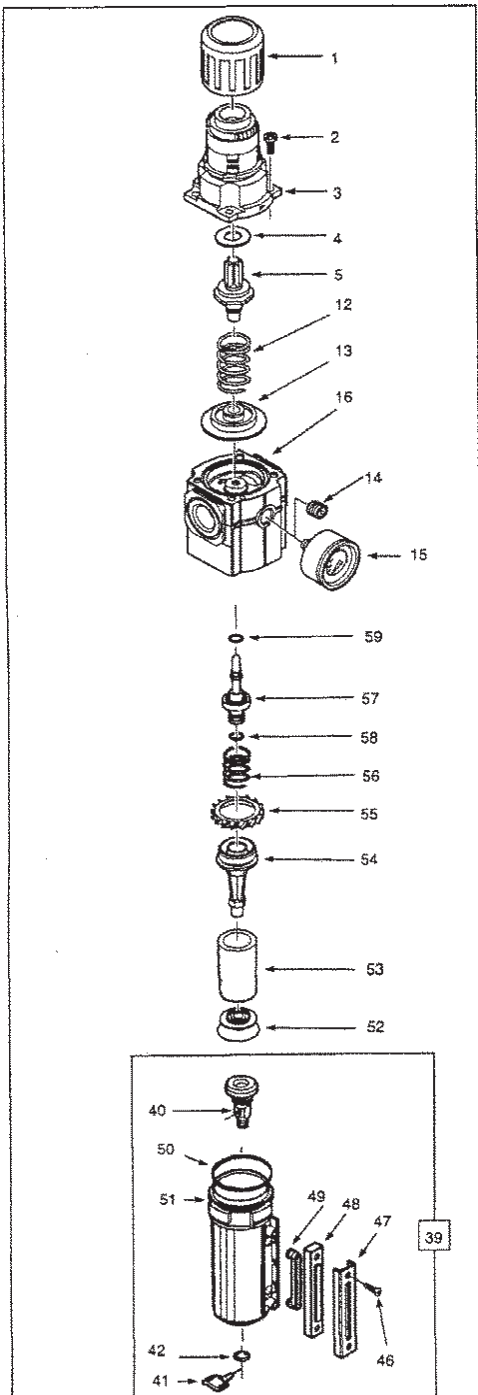


602134 - 1/4" PORTS  
602136 - 3/8" PORTS



### TECHNICAL DATA

Fluid: Compressed air  
Maximum Pressure: 250 psig (17 bar)  
Operating Temperature: 0° to +150°F  
(-20° to +65°C)\*

\*Air supply must be dry enough to avoid ice formation at temperatures below +35°F (+2°C).

Main ports: 1/4" PTF or 3/4" PTF

Gauge ports: 1/8" PTF

Outlet pressure adjustment range: 5 to 150 psig (0.3 to 10 bar)\*\*

\*\*Outlet pressure can be adjusted to pressures in excess of, and less than, those specified. Do not use these units to control pressures outside of the specified ranges.

Filter element rating: 40µm

Materials:

Body: Zinc

Bonnet: Acetal

Valve: Brass

Bowl: Zinc

Liquid level indicator lens:  
Transparent nylon

Element: Sintered polypropylene plastic

Elastomers: Neoprene and Nitrile

### REPLACEMENT ITEMS AND ACCESSORIES

Service Kit (13, 50, 56, 57, 58, 59).....	247882
Liquid level lens kit (46, 48, 49, 50).....	247875
Filter element, 40µm (53).....	247892
Manual drain (40, 41, 42).....	247893
Tamper resistant cover.....	247777

### PANEL MOUNTING DIMENSIONS

Panel mounting hole diameter: 1.57" (40 mm)

Panel thickness: 0.06" to 0.16" (2 to 4 mm)

### INSTALLATION

1. Install unit vertically in air line -
  - upstream of lubricators and cycling valves,
  - with air flow in direction of arrow on body,
  - as close as possible to the device

being serviced.

2. Connect piping to proper ports using pipe thread sealant on male threads only. Do not allow sealant to enter interior of unit.
3. Turn bowl fully clockwise into body before pressurizing.
4. Install a pressure gauge or plug the gauge ports. Gauge ports can also be used as additional outlets for regulated air.
5. Manual drain is ported 1/8-27 and 1/8-28 pipe thread.

### ADJUSTMENT

1. Turn adjustment clockwise to increase pressure setting. Turn adjustment counterclockwise to decrease pressure setting.
2. Always approach the desired pressure from a lower pressure. When reducing from a higher to a lower setting, first reduce to some pressure less than that desired, then bring up to the desired pressure.
3. Push knob down to lock pressure setting. Pull knob up to release. Install tamper resistant cover (see Replacement Items and Accessories) to make setting tamper resistant.

### SERVICING

1. Open manual drain to expel accumulated liquids. Keep liquids below baffle (52).
2. Clean or replace filter element (53) when dirty.

### DISASSEMBLY

1. Shut off inlet pressure. Reduce pressure in inlet and outlet lines to zero. Turn adjustment (1) fully counterclockwise.
2. Remove bowl - push into body and turn counterclockwise.
3. Disassemble in general accordance with the item numbers on exploded view. Disassemble and replace drain (40, 41, 42) only if it

malfunctions.

#### **CLEANING**

1. Clean lens (48) with warm water only. Clean other parts with warm water and soap.
2. Rinse and dry parts. Blow out internal passages in body with clean, dry compressed air. Blow air through filter element (53) from inside to outside to remove surface contaminants
3. Inspect parts. Replace parts found to be damaged.

#### **ASSEMBLY**

1. Lubricate o-rings, valve stem (57), outer circumference and both sides of the thrust washer (4), and stem of drain valve (41) with o-ring grease.
2. Assemble the unit as shown on the exploded view. Turn bowl (51) fully

clockwise into body.

3. Torque Table	Inch-Pounds (Nm)
2 (screw)	25 to 35 (2.8 to 3.9)
46 (screw)	13 to 16 (1.5 to 1.8)
52 (baffle)	6 to 8 (0.7 to 0.9)
54 (center-post)	6 to 8 (0.7 to 0.9)

#### **CAUTION**

Water vapor will pass through these units and could condense into liquid form downstream as air temperature drops. Install an air dryer if water condensation could have a detrimental effect on the application

#### **WARNING**

These products are intended for use in industrial compressed air systems only. Do not use these products where pressures and temperatures can exceed those listed under Technical

Data.

If outlet pressure in excess of the filter/regulator pressure setting could cause downstream equipment to rupture or malfunction, install a pressure relief device downstream of the filter/regulator. The relief pressure and flow capacity of the relief device must satisfy system requirements.

The accuracy of the indication of pressure gauges can change, both during shipment (despite care in packaging) and during the service life. If a pressure gauge is to be used with these products and if inaccurate indications may be hazardous to personnel or property, the gauge should be calibrated before initial installation and at regular intervals during use.

Do not use these products with fluids other than air, for non industrial applications, or for life-support systems.

### **LIMITED WARRANTY-**

Lincoln warrants the equipment it supplies to be free from defects in material and workmanship for one (1) year following the date of purchase. If equipment proves to be defective during this warranty period it will be repaired or replaced, at Lincoln's discretion, without charge provided that factory authorized examination indicates the equipment to be defective. To obtain repair or replacement, you must ship the equipment, transportation charges prepaid, with proof of date of purchase to a Lincoln authorized warranty and service center, within one (1) year following the date of purchase.

### **LIMITED 5 YEAR WARRANTY (Series 20, 25, 40 Bare Pumps, Heavy Duty and Golden Standard Bare Reels)-**

Lincoln warrants series 20, 25, 40 bare pumps, and heavy duty and golden standard bare reels it supplies to be free from defects in material and workmanship for one (1) year following the date of purchase. If equipment proves to be defective during the warranty period it will be repaired, or replaced, at Lincoln's discretion, without charge provided that factory authorized examination indicates the equipment to be defective. To obtain repair or replacement, you must ship the equipment, transportation charges prepaid, with proof of purchase to a Lincoln Authorized Warranty and Service Center within one (1) year following the date of purchase. Additionally, in years two (2) and three (3) the warranty on this equipment is limited to repair with Lincoln paying parts and labor only. In years four (4) and five (5), the warranty on this equipment is limited to repair with Lincoln paying for parts only.

This warranty is extended to the original retail purchaser only. It does not apply to equipment damaged from accident, overload, abuse, misuse, negligence, faulty installation or abrasive or corrosive material, or to equipment repaired or altered by anyone not authorized by Lincoln to repair or alter the equipment. This warranty applies only to equipment installed and operated according to the recommendations of Lincoln or its authorized field personnel. No other express warranty applies.

Any implied warranties applicable to equipment supplied by Lincoln, including the warranties of merchantability and fitness for a particular purpose, will last for only one (1) year from the date of purchase. Some jurisdictions do not allow limitations on how long an implied warranty lasts, so the above limitation may not apply to you.

In no event shall Lincoln be liable for incidental or consequential damages. Lincoln's liability on any claim for loss or damages arising out of the sale, resale or use of equipment it supplies shall in no event exceed the purchase price. Some jurisdictions do not allow the exclusion or limitation of incidental or consequential damages, so the above limitation or exclusion may not apply to you.

This warranty gives you specific legal rights. You may also have other rights that vary by jurisdiction.