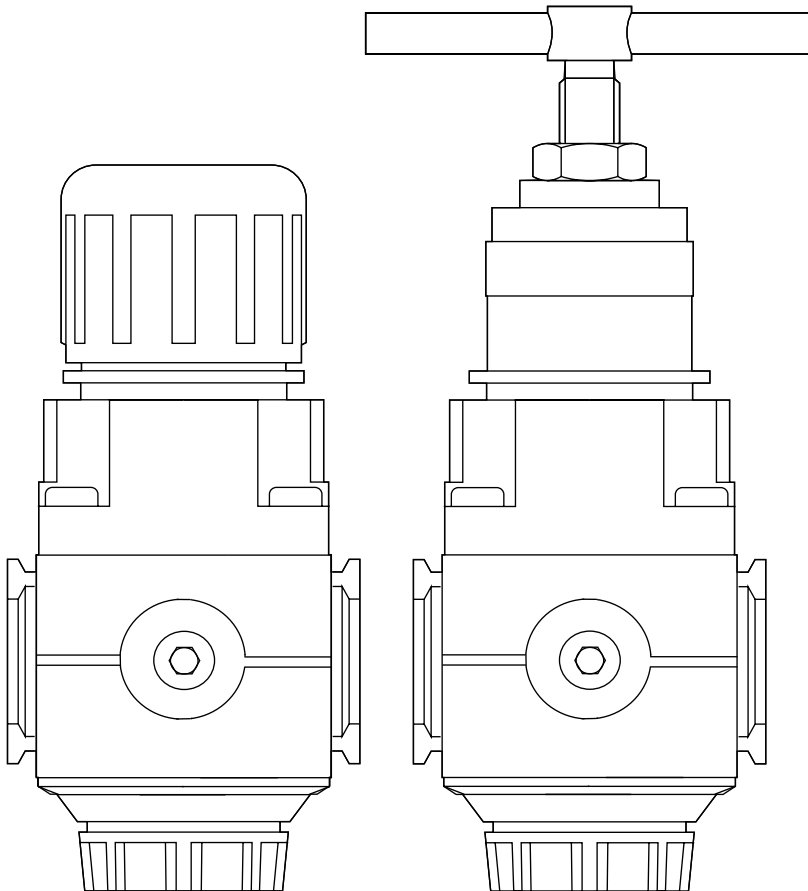


# Air line pressure regulator

Models 602004, 602005, 602006 and 602007



Date of issue	<b>November 2017</b>
Form number	<b>402777</b>
Version	<b>2</b>

# Contents

<b>Safety</b> .....	2
Explanation of signal words for safety .....	2
Specifications .....	3
Dimensions .....	3
Typical performance characteristics .....	4
<b>Installation</b> .....	4
<b>Adjustment</b> .....	4
Knob adjustment .....	4
<b>Disassembly</b> .....	4
<b>Cleaning</b> .....	4
<b>Assembly</b> .....	5
Torque table .....	5
Service parts .....	6
<b>Warranty</b> .....	8

## Safety

Read and carefully observe operating instructions before unpacking and operating regulator. Regulator must be operated, maintained and repaired exclusively by persons familiar with operating instructions.

Local safety regulations regarding installation, operation and maintenance must be followed. Operate regulator only after safety instructions and service manual are fully understood.

## Explanation of signal words for safety

### NOTE

Emphasizes useful hints and recommendations as well as information for efficient and trouble-free operation.

### ⚠ CAUTION

Indicates a dangerous situation, that can lead to light personal injury or property damage, if precautionary measures are ignored.

### ⚠ WARNING

Indicates a dangerous situation, that can lead to death or severe personal injury, if precautionary measures are ignored.

### ⚠ DANGER

Indicates a dangerous situation, that will lead to death or severe personal injury, if precautionary measures are ignored.

**Table 1**

**Panel mounting dimensions**

Panel mounting hole diameter	1.57 in (40 mm)
Panel thickness	0.06 to 0.16 in (2 to 4 mm)

**Specifications**

Maximum pressure	300 psi (20 bar)
Temperature range	0 to 150 °F (-20 to 65 °C) <sup>1)</sup>
Fluid	Compressed air
Main ports	1/4 or 3/8 in NPTF
Gauge ports	1/8 in NPTF
Outlet pressure adjustment range	5 to 150 psi (0,3 to 10 bar) <sup>2)</sup>
Flow	70 scfm (33 dm <sup>3</sup> /s) <sup>2)</sup>
Weight	0.79 lb. (0,36 kg)

**Materials**

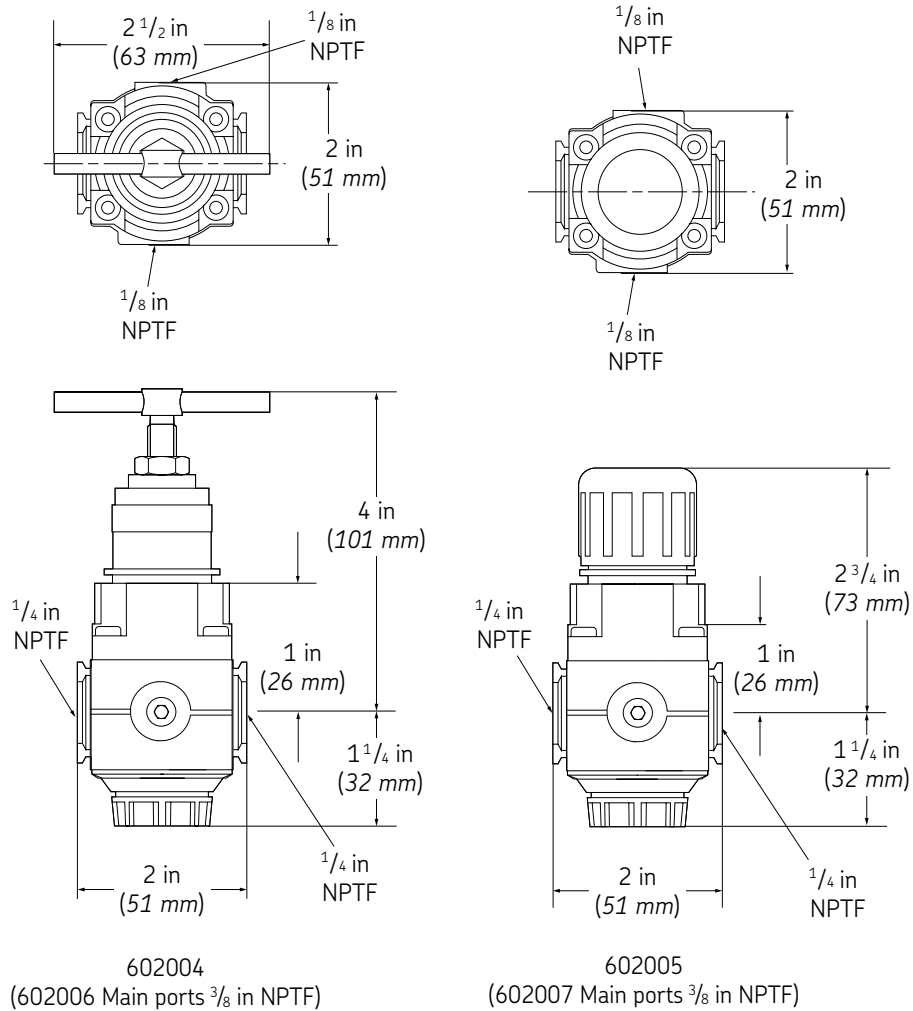
Body	Zinc
Bonnet	Acetal
Valve	Brass

Bottom plug	Acetal
Elastometers	Nitrile

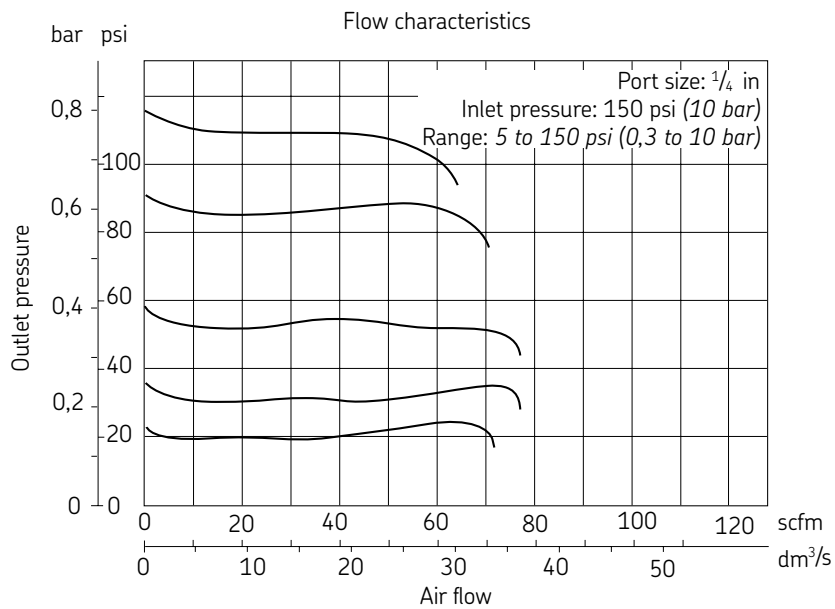
<sup>1)</sup> Air supply must be dry enough to avoid ice formation at temperatures below 35 °F (2 °C).  
<sup>2)</sup> Outlet pressure can be adjusted to pressures in excess of, and less than, those specified. Do not use these units to control pressures outside of the specified ranges.

**Fig. 1**

**Dimensions**



## Typical performance characteristics



## Installation

- 1 Install regulator in air line at any angle:
  - Upstream of cycling valves
  - With air flow in direction of arrow on body
  - As close as possible to device being serviced
- 2 Connect piping to proper ports using pipe thread sealant on external threads only. Do not allow sealant to enter interior of unit.
- 3 Install a pressure gauge or plug the gauge ports. Gauge ports can also be used as additional outlets to regulated air.
- 4 Install a general purpose filter upstream of the regulator.

## Adjustment

- 1 Turn adjustment clockwise to increase pressure setting. Turn adjustment counter-clockwise to decrease pressure setting.
- 2 Always approach the desired pressure from a lower pressure. When reducing from a higher to a lower setting, first reduce to some pressure less than that desired, then bring up to the desired pressure.

## Knob adjustment

- 1 Push knob down to lock pressure setting. Pull knob up to release. Install tamper resistant cover 247777 to make setting tamper resistant.
- 2 Monitor device being lubricated for a few days following initial adjustment. Adjust drip rate if oil delivery at device appears either excessive or low.

### NOTE

Tighten lock nut (2) to lock pressure setting for T-bar adjustment.

## Disassembly

- 1 Shut off inlet pressure. Reduce pressure in inlet and outlet lines to zero.
- 2 Turn adjustment (6 or 1) fully counter-clockwise.
- 3 Unit can be disassembled without removal from air line.
- 4 Disassemble in general accordance with the item numbers on exploded view.

## Cleaning

- 1 Clean parts using warm water and soap.
- 2 Rinse and dry parts. Blow out internal passages in body with clean, dry compressed air.
- 3 Inspect parts. Replace parts found to be damaged.

# Assembly

- 1 Lubricate o-rings and valve stem (16), tip of adjusting screw (6) and the outer circumference and both sides of the thrust washer (9) with a light coat of good quality o-ring grease.
- 2 Assemble the unit as shown on the exploded view.

Table 2

### Torque table

Item number	Description	In-Pounds (Nm)
3, 7	Screw	25 to 35 (2,8 to 3,9)
21	Bottom plug	15 to 20 (1,7 to 2,3)

### ⚠ WARNING

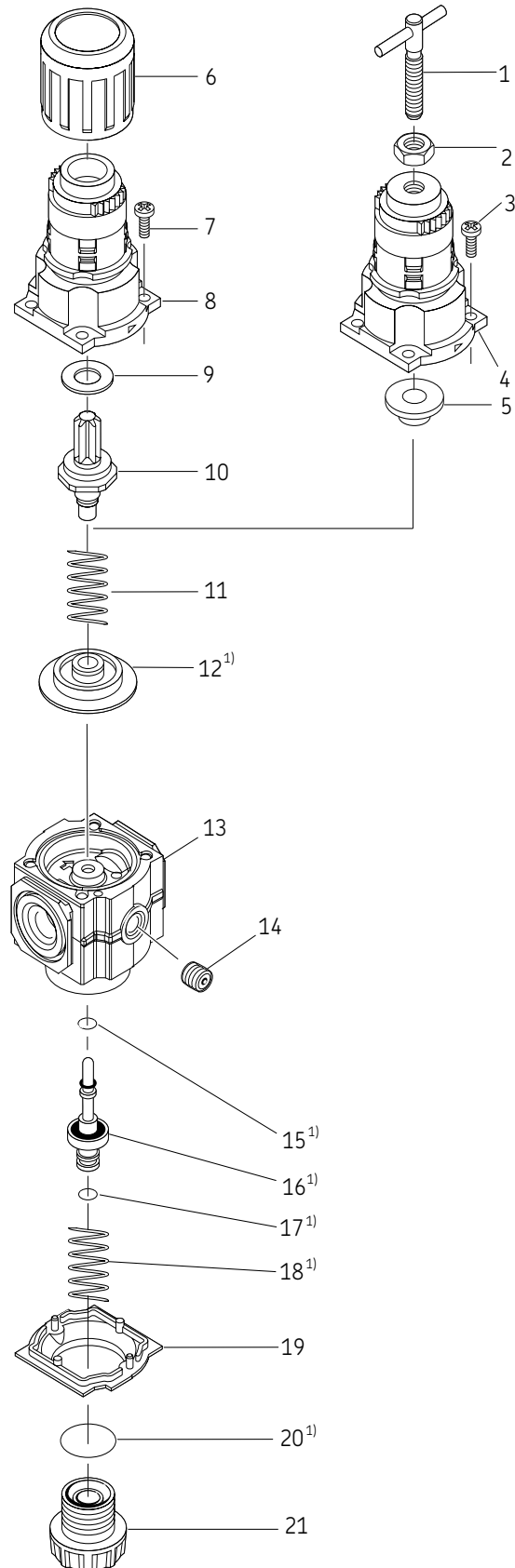
Do not use products where pressures and temperatures exceed **Specifications**. Products intended for industrial compressed air systems only.

Install a pressure relief device downstream of regulator to avoid pressure exceeding regulator pressure setting. Downstream equipment can rupture or malfunction. Relief pressure and flow capacity of relief device must satisfy system requirements.

Accuracy of pressure gauges can change, both during shipment (despite care in packaging) and during service life. If pressure gauge is to be used with products and it is inaccurate, it may be hazardous to personnel or property. Gauge should be calibrated before initial installation and at regular intervals during use.

Failure to comply may result in death or serious injury.

Fig. IPB 1



<sup>1)</sup> Available to order in service kit 247878.

**Service parts**

Item number	Description	Kit number
1	T-bar	1)
2	Lock nut	1)
3	Screw	1)
4	Bonnet	1)
5	Spring rest	1)
6	Knob, adjusting	1)
7	Screw	1)
8	Bonnet	1)
9	Washer, thrust	1)
10	Screw, adjusting	1)
11	Spring, regulating	1)
12	Diaphragm	247878
13	Body	1)
14	Plug, pipe 1/8 NPTF	1)
15	O-ring	247878
16	Valve assembly	247878
17	O-ring	247878
18	Spring, valve	247878
19	Cover, bottom	1)
20	O-ring	247878
21	Plug, bottom	1)
	Back mounted gauge PSI 0-160	247843 <sup>2)</sup>
	Bottom mounted gauge PSI 0-200	66101 <sup>2)</sup>

<sup>1)</sup> Not available to order.  
<sup>2)</sup> Not shown.

This page left intentionally blank.

## Warranty

The instructions do not contain any information on the warranty. This can be found in the General Conditions of Sales, available at: [www.lincolnindustrial.com/technicalservice](http://www.lincolnindustrial.com/technicalservice) or [www.skf.com/lubrication](http://www.skf.com/lubrication).

[skf.com](http://skf.com) | [lincolnindustrial.com](http://lincolnindustrial.com)

® SKF and Lincoln are registered trademarks of the SKF Group.

© SKF Group 2017  
The contents of this publication are the copyright of the publisher and may not be reproduced (even extracts) unless prior written permission is granted. Every care has been taken to ensure the accuracy of the information contained in this publication but no liability can be accepted for any loss or damage whether direct, indirect or consequential arising out of the use of the information contained herein.  
November 2017 · Form 402777 Version 2