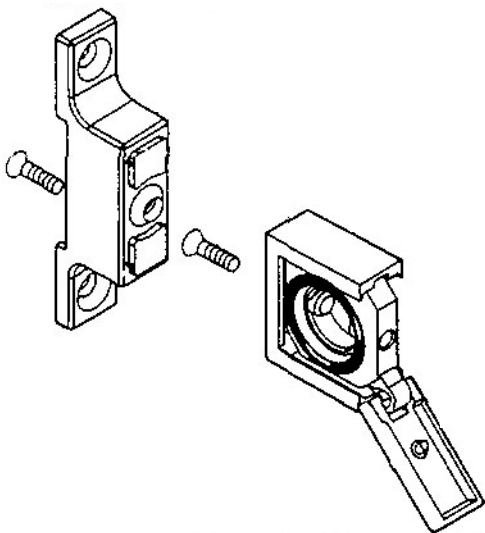


Clamps and wall brackets

Models 247782, 247783, 247792, 247793



Date of issue	October 2017
Form number	402766
Version	2

Models

247782	Basic 1/4 in. clamp
247783	Basic 1/2 in. clamp
247792	Basic 1/4 in. wall bracket
247793	Basic 1/2 in. wall bracket

Fig. 1

Basic 1/4 in. clamp and wall bracket

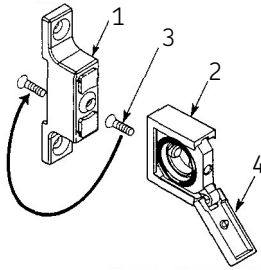


Fig. 2

Basic 1/2 in. clamp and wall bracket

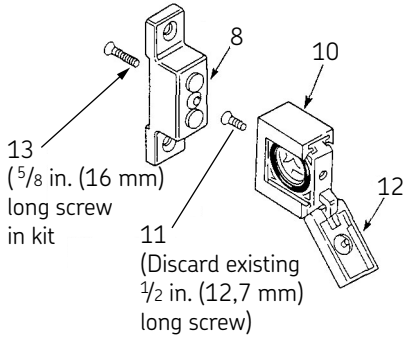


Fig. 4

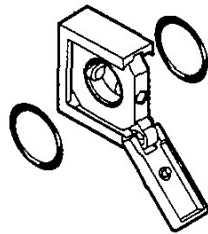
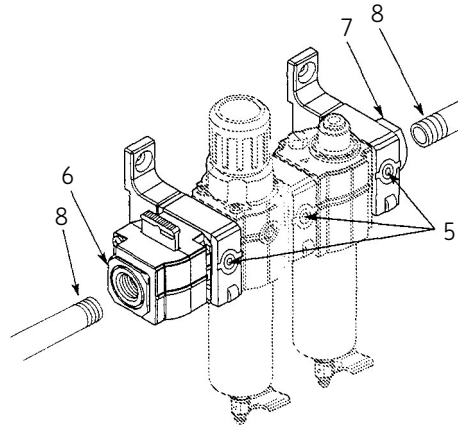


Fig. 3

FRL installation



Basic 1/4 in. clamp identification and specifications

The basic 1/4 in. clamp does not have o-ring grooves that retain the face-sealing, o-rings, O-rings are retained by grooves in basic 1/4 in. FRL Units.

Technical data

Fluid: Compressed air
 Maximum pressure: 250 psig (17.2 bar)
 Maximum temperature: 150 °F (65 °C)
 Body: Zinc
 Elastomers: Nitrile

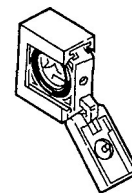
Basic 1/2 in. clamp identification and specifications

The basic 1/2 in. clamp has o-ring grooves that retain the face-sealing o-rings.

Technical data

Fluid: Compressed air
 Maximum pressure: 250 psi (17,2 bar)
 Maximum temperature: 175 °F (79 °C)
 Body: Zinc
 Elastomers: Nitrile

Fig. 5



Service kit

Contains 2 o-rings
 Basic 1/4 in. clamp: 247885
 Basic 1/2 in. clamp: 247887

Tools required

Basic 1/4 in. Clamp: 3mm hexor T15 Torx wrench for screw (3, 5).
 Basic 1/2 in. Clamp: 5/32 in. (4mm) hexor a T25 Torx wrench for screw (5, 11, 13).

Basic 1/4 in. series optional wall bracket (fig. 1)

If optional wall bracket (1) is not assembled to clamp (2):

- 1 Remove screw (3) from clamp.
- 2 Attach wall bracket to clamp using screw (3).
- 3 Tighten screw (3) as shown in the **Torque table**.

Basic 1/2 in. series optional wall bracket (fig. 2)

If optional wall bracket (9) is not assembled to clamp (10):

- 1 Remove and discard screw (11).
- 2 Attach wall bracket to clamp using screw (13). Tighten screw (13) as shown in torque table.
- 3 Engage port flanges on units with V-grooves in clamp, then slide units into clamp.

NOTE

Clamps can be any of four orientations over port flanges on FRL units.

Attach units to clamp

- 1 Loosen captive screw (5), then open clamp (4 or 12).
- 2 Basic 1/4 in. clamp: Make sure o-rings are securely in place in o-ring grooves in the units.
- 3 Basic 1/2 in. clamp: Make sure o-rings are securely in place in o-ring grooves in the clamp.
- 4 Close clamp and tighten captivescrew (5) as shown in **Torque table**. Do not tighten or adjust clamps when clamp is under pressure.

Install in air line

- 1 Connect system pipe to proper ports using pipe thread sealant on male threads only. Do not allow sealant to enter interior of unit.
- 2 Hold unit with a pipe wrench on the body, the port flange (6), or the pipe adapter (7), then tighten pipe (8) into ports,

NOTE

Failure to hold unit in place with a wrench when turning pipe (8) into ports may result in damage to clamp and clamp wall bracket.

Remove FRL units from clamp

- 1 Shut off inlet pressure. Reduce pressure in inlet and outlet lines to zero.
- 2 Loosen captive screw (5), open clamp, and remove unit.

Torque table

Clamp	Item	Torque
Basic 1/4 in.	3, 5 (screw)	15 to 25 in.lbf (1,7 to 2,8 Nm)
Basic 1/2 in.	5, 13 (screw)	30 in.lbf (3,4 Nm)

⚠ WARNING

These products are intended for use in industrial compressed air systems only. Do not use these products where pressures and temperatures can exceed those listed under technical data for pump.

Do not loosen or tighten captive screw (5) when clamp is pressurized. If screw is loosened when clamp is pressurized, an audible air leak warns of air pressure. If screw is over-torqued when clamp is pressurized, threads can be damaged and system pressure may rapidly open clamps (4 and 12).

Do not use these products with fluids other than air, for nonindustrial applications, or for life-support systems.

Warranty

The instructions do not contain any information on the warranty. This can be found in the General Conditions of Sales, available at: www.lincolnindustrial.com/technicalservice or www.skf.com/lubrication.

skf.com | lincolnindustrial.com

® SKF and Lincoln are registered trademarks of the SKF Group.

© SKF Group 2017
The contents of this publication are the copyright of the publisher and may not be reproduced (even extracts) unless prior written permission is granted. Every care has been taken to ensure the accuracy of the information contained in this publication but no liability can be accepted for any loss or damage whether direct, indirect or consequential arising out of the use of the information contained herein.

October 2017 · Form 402766 Version 2